

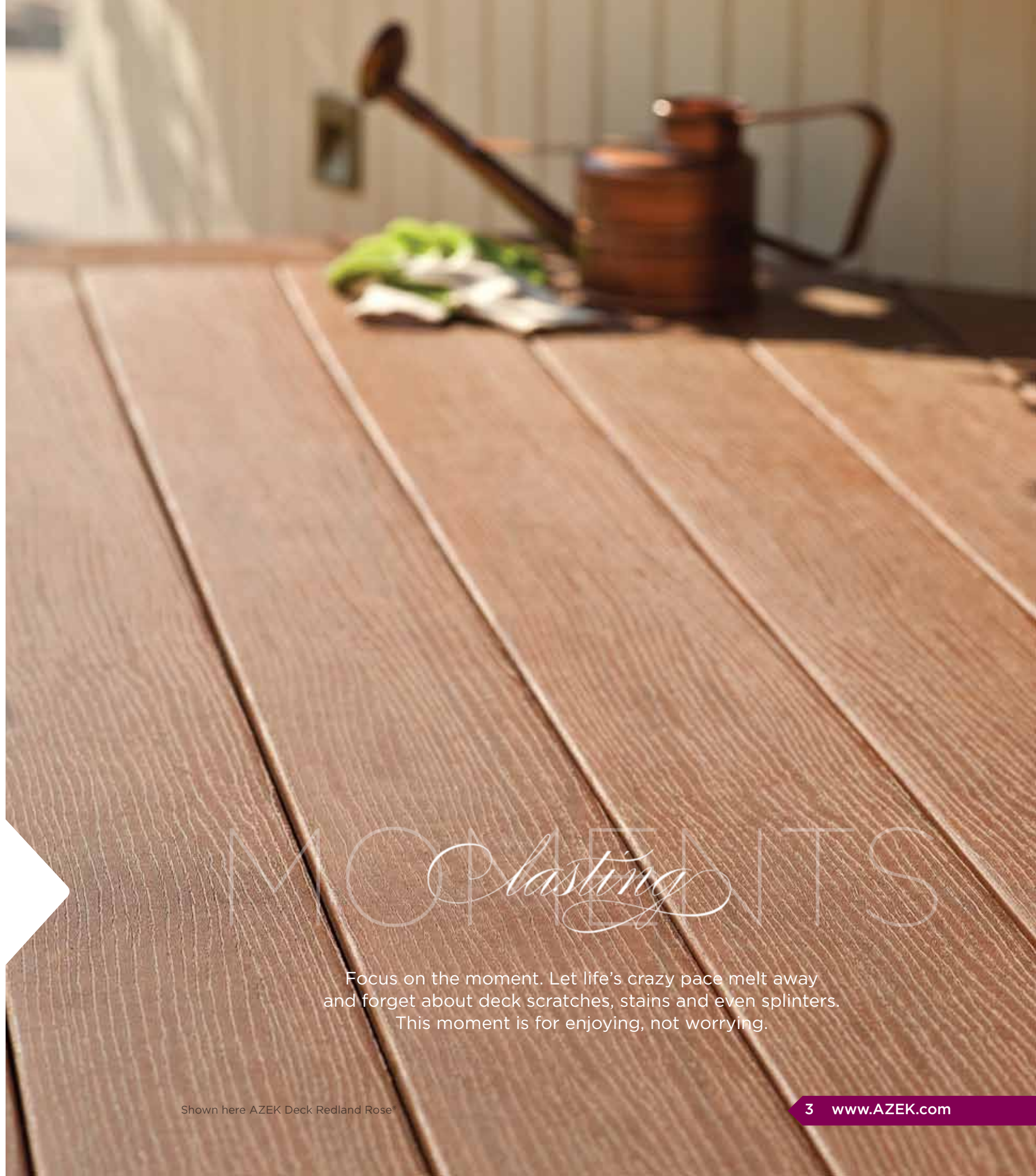


DECK
PORCH
RAIL

AZEK[®]
Building Products
Designed to last beautifully.[™]

Market demand is moving from wood and composites to a new category of low maintenance decking. With stain and scratch resistance that makes life on the deck easy and a broad palette of shades to complement any exterior, AZEK Deck is the smart and beautiful low maintenance decking.

And, with over 25 years experience in cellular pvc manufacturing, AZEK Deck is no stranger to better performance. Manufactured in the USA, AZEK has invested years of technical expertise to develop decking that is...designed to last beautifully.



MOMENTS *lasting* MOMENTS

Focus on the moment. Let life's crazy pace melt away and forget about deck scratches, stains and even splinters. This moment is for enjoying, not worrying.



PL *peaceful* ES

Hard work deserves just rewards. Reward yourself with the special place you have always envisioned. A refuge. An escape. A sanctuary. An AZEK Deck.



FRIENDS

good

Impromptu gatherings and casual get-togethers are made even easier with a low maintenance AZEK Deck. It's always ready for entertaining.

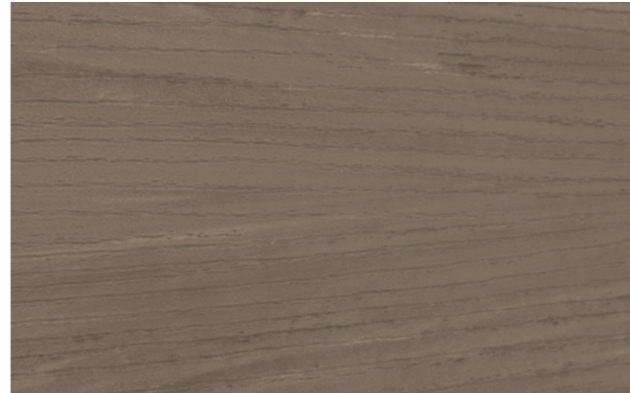
DECK COLORS

AZEK Deck is available in a variety of colors and grains to suit every taste and complement every exterior. Simply choose the AZEK Deck color that works with your home to create your unique outdoor environment. Then sit back and enjoy.

Arbor Collection®



Cobre®



Silver Oak®



Morado®



Redland Rose®



Acacia®

AZEK Deck's Arbor Collection resembles the warm, vibrant tones of exotic wood. Just imagine...the look of tropical hardwoods with the proven performance of AZEK Deck.

Unique color variations within each board are designed to emulate the natural aesthetics of exotic hardwoods.

Terra Collection



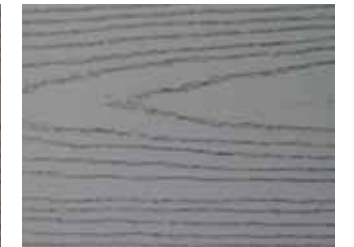
Kona®



Fawn®



Sedona*



Tahoe*

AZEK Deck's Terra Collection brings warm, earthy tones to life in four rich colors that complement any housing exterior. Enhanced grain textures set Sedona and Tahoe apart from all other decking options.

*Sedona and Tahoe Fascia are manufactured without grain highlights in order to better complement all AZEK Deck colors.

Harvest Collection®



Brownstone



Slate Gray



Clay



White



Modena®

The Harvest Collection of AZEK Deck colors offer a pleasing palette of soft shades that complement the most popular siding colors. Many of these tried and true decking colors helped establish our unquestioned reputation for superior stain, scratch and split resistance.

For a full line of AZEK Building Products, visit www.AZEK.com.

Actual colors may vary slightly from photographs. To request samples, go to www.AZEK.com. Depending on environmental conditions, AZEK Deck colors may appear to lighten over time as part of the natural weathering process.



FIRST THERE WAS WOOD. THEN COMPOSITE. NOW THERE'S AZEK DECK.

Stain Resistant

AZEK Deck resists staining from stubborn stain makers like ketchup, cooking grease and red wine.

Scratch Resistant

AZEK Deck resists scratching from patio furniture, people and pets even in high traffic areas.

Split Resistant

AZEK Deck resists splitting from fasteners placed close to the edge.

Most Important Decking Attributes

	AZEK	Composite	Wood
Long life/durability	●	◐	◑
Low maintenance	●	◐	◑
Limited Lifetime Warranty	●	◐	◑
Mold resistance	●	◐	◑
Stain resistance	●	◐	◑
Scratch resistance	●	◐	◑
Easy to clean	●	◐	◑
	●	◐	◑
	BEST	BETTER	GOOD

AZEK Deck beats other decking options – wood or composite!

Go to www.AZEK.com and see our Double Dare challenge.

Assembled bench shown in AZEK Acacia® and AZEK Morado® with Bronze hardware



OUTDOOR LIVING SOLUTIONS

Turn your outdoors into a great outdoors with AZEK's Outdoor Living Solutions. Designed to enhance and expand your AZEK Deck, these two unique innovations offer a creative solution to storage and seating that is upscale and low maintenance.

AZEK Bench/Planter Hardware Kit*

A bench with integrated flower/planter boxes brings the deck to life. Easy to build bench hardware kit utilizes AZEK Deck boards to construct a bench with two integrated flower/planter boxes. Choose the color for your AZEK Bench to match or complement your AZEK Deck or AZEK Porch.

The full bench/planter assembly at maximum length measures 10 ft. 7 in., providing up to six feet of seating area. The sturdy bench, adjustable to 4, 5 or 6 ft., can support up to 750 lbs to make this the perfect addition to any deck. And the planters can be used individually or as part of the bench assembly.

Hardware for the bench and the planters is available in two finishes – Titanium and Bronze. You simply choose the AZEK Deck boards in the color of your choice for the bench and the planters.

Hardware Finishes



Titanium



Bronze

AZEK In-Deck Storage Kit*

Are you tired of trying to find a place to safely store furniture cushions and covers, umbrellas or other deck items? If so, the AZEK In-Deck Storage Kit is the perfect way to lose the unattractive deck storage boxes and reclaim the deck space to expand your outdoor living area. This highly functional, attractive and concealed storage solution presents a uniquely creative and integrated use of space on an AZEK Deck. You can use this clever storage system to hide anything from deck umbrellas to lounge cushions.

Measuring just over 6 ft long and holding 17.5 cubic feet of storage space, the AZEK In-Deck Storage Unit and has been built to prevent water infiltration. Designed with safety in mind, the gas-assist hinges make lifting the lid easy and the locking mechanism can only be engaged from outside using a key.

The kit hardware is available in two finishes, Titanium and Bronze, to complement any AZEK Deck color.



In-Deck Storage shown here AZEK Modena®. Filled storage (left) shown AZEK Morado® Bronze hardware on both

Seeing a traditional porch often brings back memories of a simpler time. A warm breeze, a front swing, and a cold glass of lemonade. With today's architectural trends, that traditional front porch is making a comeback, but without all the work. AZEK Porch, in five popular shades, gives the upscale look of a traditional porch, but resists everyday stains and scratches.

Built to handle the high traffic that any porch encounters, with AZEK Porch you'll make a great first impression...that lasts long beyond the first day.



HOME
welcome

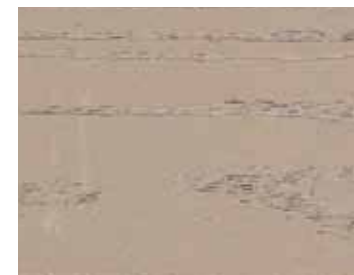
Greet your family and friends on a porch that is pleasing to the eye and yet durable. The smooth tongue and groove surface offers a surface befitting the raves of your neighbors.



PLEASE *relaxing* PLEASE

Sit back and enjoy the lasting beauty of an AZEK Porch. While the seas roll and the sands shift, AZEK Porch will stand the test of time gracefully with minimal upkeep.

PORCH COLORS



Brownstone

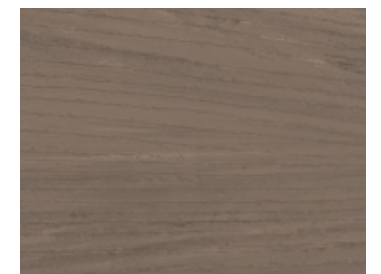


Slate Gray

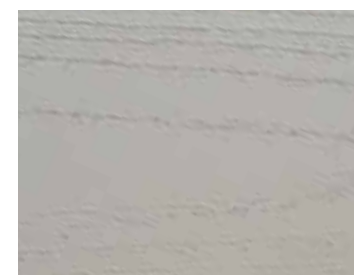
NEW FOR 2012



Morado™



Silver Oak™



Oyster™

Actual colors may vary slightly from photographs. To request samples, go to www.AZEK.com. Depending on environmental conditions, AZEK Porch colors may appear to lighten over time as part of the natural weathering process.

Strong, good looks are just the beginning. AZEK Rail offers the look and feel of real wood coupled with high durability and low maintenance.

Designed to offer a sleek railing system without visible fasteners, AZEK Rail is available in three distinct styles and 6 popular colors.

With a style for every lifestyle, AZEK Rail has an option to fit any home.



BE STRIKINGLY BETTER

Clean lines. Classic proportions. Luxurious feel.
All the qualities a superior railing should have.



RIGHT
Feels

AZEK Rail combines the solid feel of wood with classically beautiful lines and lasting good looks.

Shown here: AZEK Morado[®] and AZEK Rail Premier Black

RAIL DESIGNS

AZEK Premier Railing
(available in all colors shown)



Black



Kona[®]



Brownstone



Slate Gray



Clay



White



AZEK Trademark Railing
(available in white)



AZEK Reserve Railing
(available in white)



STRONG *standing*

Built with peace of mind in mind, AZEK Rail offers strength, durability and low maintenance.



Looking

When first impressions count, count on AZEK Rail to make your home look great.



Shown here AZEK Gate and AZEK Rail in White



Shown here AZEK Gate and AZEK Rail in Kona®

AZEK Gate Hardware Kit

Owning a working, lockable, great looking gate at home is now easy. The AZEK Gate Kit offers an affordable solution that can be installed on your deck/porch yet resembles a custom application.

Your AZEK Gate can be built as a single gate and is available in an AZEK Rail color to complement your deck or porch – Brownstone, Slate Gray, Black, Kona and White. The double gate is available in White.

Featuring a lockable latch system, the AZEK Gate is strong and sturdy without unattractive cross bracing.

Single gate opening is approximately 42" and double gate opening is approximately 83".

RAIL LIGHTING

NEW FOR 2012: Lighted Post Caps and Under Top Rail Lighting



TURN ON YOUR DECK WITH AZEK RAIL LIGHTING

Introducing three great outdoor lighting solutions to bring light and life to your AZEK Rail. Lighted Post Caps and innovative Under Top Rail Lighting are the newest additions to the AZEK Rail product line.



Lighted Post Caps

- Available in two styles: Villa™ Cap and Island Cap
- Fit all AZEK Rail 5 x 5 Post
- Powered by low voltage power supply
- Create warm deck ambiance
- Complement existing AZEK Post Caps

Under Top Rail Lighting

- Works with AZEK Premier and AZEK Trademark Railings
- Integrates easily into new or existing railings
- Simple design requires no extra fasteners
- Can be powered in conjunction with AZEK Lighted Post Caps
- Fully adjustable to fit any length railing section

Technical specifications available on www.azek.com



Shown here AZEK Under Top Rail Lighting illustrated installation process



AZEK Villa™ Cap and Under Top Rail Lighting
(available in White and Black)



AZEK Lighted Island Cap and Under Top Rail Lighting
(available in White, Black, Brownstone and Kona®)

PRODUCT LISTING

AZEK Deck Colors

Harvest Collection®

Brownstone
Clay
Modena®
Slate Gray
White

Terra Collection

Kona®
Fawn®
Sedona®
Tahoe®

Arbor Collection®

Acacia®
Cobre®
Morado®
Redland Rose®
Silver Oak®

Deck Board Sizes

1" x 5 1/2" x 12'
1" x 5 1/2" x 16'
1" x 5 1/2" x 20'*

Rim Joist Cover Sizes

1/2" x 11 3/4" x 12'

* White only available in this size

In-Deck Storage Hardware Kit Colors

Titanium
Bronze

Bench and Planter Hardware Kit Colors

Titanium
Bronze

AZEK Porch Colors

Brownstone
Slate Gray
Oyster™
Morado®
Silver Oak®

Porch Board Sizes

1" x 3 1/8" x 10'**
1" x 3 1/8" x 12'
1" x 3 1/8" x 16'

** Only available in Brownstone and Slate Gray

AZEK Rail Styles

AZEK Premier Rail Kits

White
Black
Brownstone
Clay
Kona®
Slate Gray

AZEK Trademark Rail Kits

White

AZEK Reserve Rail Kits

White

AZEK Rail Kit Sizes

Lengths
6 foot
8 foot
Heights
36"
42"

AZEK Rail Post Sleeves

Colors
White
Black
Brownstone
Clay
Kona®
Slate Gray

5x5 Sizes

39"
45"
54" *
* White only

4 x 4 Size

54" *
* White only

6 x 6 Size

108" *
* White only

AZEK Surface Mount Brackets

Universal
Works with all AZEK Rail colors

AZEK Rail Hardware Universal

8' Straight Rail Master Pack
Straight Rail Bracket Pack
Universal Ball Bracket Pack
22.5 Shim Bracket Pack

Stair Bracket Pack

All AZEK Rail colors

AZEK Rail Accessories

Post Skirts, Pyramid Caps and Island Caps
All AZEK Rail colors

Lighted Villa™ Cap

White
Black

Lighted Island Cap

White
Black
Brownstone
Kona®

Under Top Rail Lighting

Fits all colors of AZEK Rail

Replacement Balusters (35" and 37")

All colors

AZEK Gate Kit and Hardware Colors

White
Black
Brownstone
Kona®
Slate Gray

Sizes

36" Single and 42" Single *
36" Double* and 42" Double *
* White Only

Hardware Packs

5" Gate Latch Pack
4" Latch Adapter Pack
Replacement Fasteners



LIFETIME LIMITED WARRANTY

AZEK Deck components (the "AZEK Products") are warranted by the manufacturer, AZEK Building Products Inc., ("AZEK" or "Manufacturer") in accordance with the terms and conditions set out below, to be free from defects in material and workmanship that (i) occur as a direct result of the manufacturing process, (ii) occur under normal use and service, (iii) occur during the warranty period and (iv) result in blistering, peeling, flaking, cracking, splitting, cupping, rotting or structural defects from termites or fungal decay.

NOTIFICATION

It is a condition of this warranty that should your AZEK Products show defects at any point, Purchaser/Property owner will notify AZEK in writing within 30 days after discovering the claimed defect and prior to beginning any repair or alteration to the AZEK Products. The notice must include a detailed description of the claimed defect, photograph(s) of the defect and proof of purchase.

It is a further condition of this Warranty that the Manufacturer will, within a reasonable period of its receipt of such notice, be permitted to inspect the claimed defect. If, after inspection, the Manufacturer determines that the claim is in accordance with the terms of this Lifetime Limited Warranty, the Manufacturer will repair or replace the defective material, or will refund the original purchase price of the defective material. The choice of remedy is in Manufacturer's sole discretion. The Manufacturer will not be liable for labor and/or removal costs connected with the claim. Replacement product will be provided as close to the original color as possible, although it is not guaranteed to match completely. In the event of repair or replacement, the original warranty shall apply to the repaired or replaced portion of the AZEK Products and will extend for the balance of the warranty period in effect at the time the material proved defective.

LIMITATIONS

This Lifetime Limited Warranty is void if any of the following occurs: (a) improper installation and/or failure to abide by the Manufacturer's installation guidelines; (b) movement, settling, distortion or collapse of the ground or supporting structure on which the AZEK Products are installed; (c) naturally occurring casualties including impact of objects, earthquakes, tornados, hurricanes, lightning, flooding or acts of God; (d) improper handling or storage, neglect or misuse of the AZEK Products either by the Purchaser or third parties; (e) improper application of paint or other surface chemicals not recommended by the Manufacturer in writing; (f) adverse effects of air pollution and (g) normal weathering of surfaces.

OTHER CONDITIONS

The Manufacturer does not recommend the AZEK Products for all end use applications. The AZEK Products are intended for decks, boardwalks and piers. Local Code Authority should be consulted before installation of structures with specific load-bearing capacities and for other zoning code requirements. This Lifetime Limited Warranty is valid for single-family, residential applications only. For all other applications, including commercial use, this warranty shall be limited to a period of twenty (20) years.

THE WARRANTY STATEMENTS CONTAINED IN THIS LIFETIME LIMITED WARRANTY SET FORTH THE ONLY WARRANTIES EXTENDED BY AZEK AND ARE IN LIEU OF ALL OTHER CONDITIONS AND WARRANTIES, EITHER EXPRESSED OR IMPLIED, INCLUDING WITHOUT LIMITATION, THE IMPLIED WARRANTIES OF MERCHANTABILITY AND FITNESS FOR A PARTICULAR PURPOSE. THE PROVISIONS OF THIS WARRANTY SHALL CONSTITUTE THE ENTIRE LIABILITY OF AZEK AND THE PURCHASER/PROPERTY OWNER'S EXCLUSIVE REMEDY FOR BREACH OF THIS WARRANTY. IN PARTICULAR, IN NO EVENT SHALL AZEK BE LIABLE TO THE PURCHASER/PROPERTY OWNER FOR SPECIAL, INCIDENTAL, INDIRECT, CONSEQUENTIAL, OR PUNITIVE DAMAGES ARISING FROM THE USE OF THE AZEK PRODUCTS OR THE BREACH OF ANY EXPRESS OR IMPLIED WARRANTY.

The laws of some states and provinces do not allow the exclusion, limitation or variation of certain conditions or warranties implied by legislation so the above limitations or exclusions may not apply to you. This Lifetime Limited Warranty gives you specific legal rights and you may also have other rights that vary from state to state and province to province.

NOTE: In order to register your Lifetime Limited Warranty, please register online at www.AZEK.com and complete registration form. Failure to do so may void certain portions of this warranty. This warranty and registration is non-transferable from the original Purchaser/Property Owner.

REGISTER ONLINE: Visit AZEK.com.

AZEK Deck, Porch and Rail products should be installed using the same good building principles used to install wood or composite deck, porch or rail products and in accordance with the local building codes and established installation guidelines. AZEK Building Products Inc. claims no liability or responsibility for the improper installation of this product. AZEK Deck, Porch and Rail products may not be suitable for every application and it is the sole responsibility of the installer to be sure that AZEK Deck, Porch and Rail products are fit for the intended use. Since all installations are unique, it is also the installer's responsibility to determine specific requirements in regards to each application. AZEK Building Products recommends that all designs be reviewed by a licensed architect, engineer or local building official before installation. Technical information and installation guidelines are available online at www.AZEK.com or from your local AZEK dealer. If you have any questions or need further assistance, please call AZEK Customer Service at 877-ASK-AZEK (877-275-2935) or visit our website at www.AZEK.com.



LIFETIME LIMITED WARRANTY

AZEK Porch components (the "AZEK Products") are warranted by the manufacturer, AZEK Building Products Inc., ("AZEK" or "Manufacturer") in accordance with the terms and conditions set out below, to be free from defects in material and workmanship that (i) occur as a direct result of the manufacturing process, (ii) occur under normal use and service, (iii) occur during the warranty period and (iv) result in blistering, peeling, flaking, cracking, splitting, cupping, rotting or structural defects from termites or fungal decay.

NOTIFICATION

It is a condition of this warranty that should your AZEK Products show defects at any point, Purchaser/Property owner will notify AZEK in writing within 30 days after discovering the claimed defect and prior to beginning any repair or alteration to the AZEK Products. The notice must include a detailed description of the claimed defect, photograph(s) of the defect and proof of purchase.

It is a further condition of this Warranty that the Manufacturer will, within a reasonable period of its receipt of such notice, be permitted to inspect the claimed defect. If, after inspection, the Manufacturer determines that the claim is in accordance with the terms of this Lifetime Limited Warranty, the Manufacturer will repair or replace the defective material, or will refund the original purchase price of the defective material. The choice of remedy is in Manufacturer's sole discretion. The Manufacturer will not be liable for labor and/or removal costs connected with the claim. Replacement product will be provided as close to the original color as possible, although it is not guaranteed to match completely. In the event of repair or replacement, the original warranty shall apply to the repaired or replaced portion of the AZEK Products and will extend for the balance of the warranty period in effect at the time the material proved defective.

LIMITATIONS

This Lifetime Limited Warranty is void if any of the following occurs: (a) improper installation and/or failure to abide by the Manufacturer's installation guidelines; (b) movement, settling, distortion or collapse of the ground or supporting structure on which the AZEK Products are installed; (c) naturally occurring casualties including impact of objects, earthquakes, tornados, hurricanes, lightning, flooding or acts of God; (d) improper handling or storage, neglect or misuse of the AZEK Products either by the Purchaser or third parties; (e) improper application of paint or other surface chemicals not recommended by the Manufacturer in writing; (f) adverse effects of air pollution and (g) normal weathering of surfaces.

OTHER CONDITIONS

The Manufacturer does not recommend the AZEK Products for all end use applications. The AZEK Products are intended for covered or uncovered porch applications. Local Code Authority should be consulted before installation of structures with specific load-bearing capacities and for other zoning code requirements. This Lifetime Limited Warranty is valid for single-family, residential applications only. For all other applications, including commercial use, this warranty shall be limited to a period of twenty (20) years.

THE WARRANTY STATEMENTS CONTAINED IN THIS LIFETIME LIMITED WARRANTY SET FORTH THE ONLY WARRANTIES EXTENDED BY AZEK AND ARE IN LIEU OF ALL OTHER CONDITIONS AND WARRANTIES, EITHER EXPRESSED OR IMPLIED, INCLUDING WITHOUT LIMITATION, THE IMPLIED WARRANTIES OF MERCHANTABILITY AND FITNESS FOR A PARTICULAR PURPOSE. THE PROVISIONS OF THIS WARRANTY SHALL CONSTITUTE THE ENTIRE LIABILITY OF AZEK AND THE PURCHASER/PROPERTY OWNER'S EXCLUSIVE REMEDY FOR BREACH OF THIS WARRANTY. IN PARTICULAR, IN NO EVENT SHALL AZEK BE LIABLE TO THE PURCHASER/PROPERTY OWNER FOR SPECIAL, INCIDENTAL, INDIRECT, CONSEQUENTIAL, OR PUNITIVE DAMAGES ARISING FROM THE USE OF THE AZEK PRODUCTS OR THE BREACH OF ANY EXPRESS OR IMPLIED WARRANTY.

The laws of some states and provinces do not allow the exclusion, limitation or variation of certain conditions or warranties implied by legislation so the above limitations or exclusions may not apply to you. This Lifetime Limited Warranty gives you specific legal rights and you may also have other rights that vary from state to state and province to province.

NOTE: In order to register your Lifetime Limited Warranty, please register online at www.AZEK.com and complete registration form. Failure to do so may void certain portions of this warranty. This warranty and registration is non-transferable from the original Purchaser/Property Owner.

REGISTER ONLINE: Visit AZEK.com.

AZEK Premier Railing Products Limited 10-Year Warranty (COLOR Railing)

AZEK Building Products warrants to the original purchaser and to any subsequent owner of a structure on which its AZEK Premier Color Railing products are originally installed, will not rot, crack, peel, blister, or suffer structural damage from fungal decay for 10 (ten) years (color railing only) from the date of the original consumer purchase when the product has been stored, handled, applied, finished and maintained in accordance with all manufacturer's guidelines.

Purchaser's sole remedy for any claim whatsoever, whether in contract, warranty, tort or strict liability arising out of the use, storage or possession of any AZEK Premier Color Railing products including, without limitation, any claim that the products fail to perform as warranted, shall be replaced with new AZEK Premier Color Railing products. To obtain replacement, the original subsequent owner must submit this Warranty Certificate with the original purchase invoice indicating the date of purchase and pictures of the defective product. The owner/purchaser must notify AZEK Building Products in writing at the address listed here, within 30 days after discovering a possible nonconformity of the Product(s), and before beginning any permanent repair. This notice should include the date on which the Product(s) were purchased. It is the Owner's responsibility to establish the purchase date. AZEK Building Products must be given a 60-day opportunity to inspect the Product(s) if requested. Upon reasonable notice, the Purchaser or Owner must allow AZEK's agents to enter the property and the structure on which the Product(s) is applied for inspection.

AZEK Building Products
Warranty Services
801 Corey Street
Scranton, PA 18505

Manufacturer's sole liability under this Warranty is limited solely to the replacement of defective product. This Warranty shall not apply to product that has not been installed in accordance with the installation guidelines specified by the Manufacturer or to product which has been abused, placed under or subjected to abnormal residential use conditions or used, modified, or otherwise treated in any manner other than as intended by Manufacturer. In no event shall Manufacturer be liable for labor, exemplary or consequential damages of any kind whatsoever.

Purchaser is solely responsible for determining the suitability of use of application of any AZEK Premier Color Railing products, or whether products meet requirements of applicable building codes for specific applications.

No person or entity is authorized by Manufacturer to make, and Manufacturer shall not be bound by, any statement or representation as to the performance of any AZEK Premier Color Railing products other than what is contained in this Warranty. This Warranty shall not be amended or altered except in a written instrument signed by Manufacturer and Purchaser.

The foregoing Warranty is exclusive and in lieu of any other warranties with respect to any AZEK Premier Color Railing products, express or implied, including without limitation, any implied warranty of merchantability or fitness for a particular purpose.

This warranty gives you specific legal rights, and you may also have other rights which vary from province to province and state to state.

REGISTER ONLINE: Visit AZEK.com.

AZEK Premier Railing Products Limited 20-Year Warranty (White Railing Only)

AZEK Building Products warrants to the original purchaser and to any subsequent owner of a structure on which its AZEK Premier Railing products are originally installed, will not rot, crack, peel, blister, or suffer structural damage from fungal decay for 20 (twenty) years (white railing only) from the date of the original consumer purchase when the product has been stored, handled, applied, finished and maintained in accordance with all manufacturer's guidelines.

Purchaser's sole remedy for any claim whatsoever, whether in contract, warranty, tort or strict liability arising out of the use, storage or possession of any AZEK Premier Railing products including, without limitation, any claim that the products fail to perform as warranted, shall be replaced with new AZEK Premier Railing products. To obtain replacement, the original subsequent owner must submit this Warranty Certificate with the original purchase invoice indicating the date of purchase and pictures of the defective product. The owner/purchaser must notify AZEK Building Products in writing at the address listed here, within 30 days after discovering a possible nonconformity of the Product(s), and before beginning any permanent repair. This notice should include the date on which the Product(s) were purchased. It is the Owner's responsibility to establish the purchase date. AZEK Building Products must be given a 60-day opportunity to inspect the Product(s) if requested. Upon reasonable notice, the Purchaser or Owner must allow AZEK's agents to enter the property and the structure on which the Product(s) is applied for inspection.

AZEK Building Products
Warranty Services
801 Corey Street
Scranton, PA 18505

Manufacturer's sole liability under this Warranty is limited solely to the replacement of defective product. This Warranty shall not apply to product that has not been installed in accordance with the installation guidelines specified by the Manufacturer or to product which has been abused, placed under or subjected to abnormal residential use conditions or used, modified, or otherwise treated in any manner other than as intended by Manufacturer. In no event shall Manufacturer be liable for labor, exemplary or consequential damages of any kind whatsoever.

Purchaser is solely responsible for determining the suitability of use of application of any AZEK Premier Railing products, or whether products meet requirements of applicable building codes for specific applications.

No person or entity is authorized by Manufacturer to make, and Manufacturer shall not be bound by, any statement or representation as to the performance of any AZEK Premier Railing products other than what is contained in this Warranty. This Warranty shall not be amended or altered except in a written instrument signed by Manufacturer and Purchaser.

The foregoing Warranty is exclusive and in lieu of any other warranties with respect to any AZEK Premier Railing products, express or implied, including without limitation, any implied warranty of merchantability or fitness for a particular purpose.

This warranty gives you specific legal rights, and you may also have other rights which vary from province to province and state to state.

REGISTER ONLINE: Visit AZEK.com.



AZEK Trademark and AZEK Reserve Railing Products Limited 20-Year Warranty

AZEK Building Products warrants to the original purchaser and to any subsequent owner of a structure on which its AZEK Trademark and AZEK Reserve Railing products are originally installed, will not rot, crack, peel, blister, or suffer structural damage from fungal decay for 20 (twenty) years (white railing only) from the date of the original consumer purchase when the product has been stored, handled, applied, finished and maintained in accordance with all manufacturer's guidelines.

Purchaser's sole remedy for any claim whatsoever, whether in contract, warranty, tort or strict liability arising out of the use, storage or possession of any AZEK Trademark or AZEK Reserve Railing products including, without limitation, any claim that the products fail to perform as warranted, shall be replaced with new AZEK Trademark or AZEK Reserve Railing products. To obtain replacement, the original subsequent owner must submit this Warranty Certificate with the original purchase invoice indicating the date of purchase and pictures of the defective product. The owner/purchaser must notify AZEK Building Products in writing at the address listed below, within 30 days after discovering a possible nonconformity of the Product(s), and before beginning any permanent repair. This notice should include the date on which the Product(s) were purchased. It is the Owner's responsibility to establish the purchase date. AZEK must be given a 60-day opportunity to inspect the Product(s) if requested. Upon reasonable notice, the Purchaser or Owner must allow AZEK's agents to enter the property and the structure on which the Product(s) is applied for inspection.

AZEK Building Products
Warranty Services
801 Corey Street
Scranton, PA 18505

Manufacturer's sole liability under this Warranty is limited solely to the replacement of defective product. This Warranty shall not apply to product that has not been installed in accordance with the installation guidelines specified by the Manufacturer or to product which has been abused, placed under or subjected to abnormal residential use conditions or used, modified, or otherwise treated in any manner other than as intended by Manufacturer. In no event shall Manufacturer be liable for labor, exemplary or consequential damages of any kind whatsoever.

Purchaser is solely responsible for determining the suitability of use of application of any AZEK Trademark or AZEK Reserve Railing products, or whether products meet requirements of applicable building codes for specific applications.

No person or entity is authorized by Manufacturer to make, and Manufacturer shall not be bound by, any statement or representation as to the performance of any AZEK Trademark or AZEK Reserve Railing products other than what is contained in this Warranty. This Warranty shall not be amended or altered except in a written instrument signed by Manufacturer and Purchaser.

The foregoing Warranty is exclusive and in lieu of any other warranties with respect to any AZEK Trademark or AZEK Reserve Railing products, express or implied, including without limitation, any implied warranty of merchantability or fitness for a particular purpose.

This warranty gives you specific legal rights, and you may also have other rights which vary from province to province and state to state.

REGISTER ONLINE: Visit AZEK.com.

AZEK Building Products, Inc.
801 Corey Street • Scranton, PA 18505
www.AZEK.com • (877) ASK-AZEK
(877) 275-2935

Thank you for considering AZEK Deck, AZEK Porch, and AZEK Rail.
Before purchasing, please visit www.AZEK.com for detailed
installation and product use information.

